

Whitakers

Estate Agents



1 Bengay Cottages, Hull, HU12 9AY

£250,000

Set at the heart of the sought after village of Burton Pidsea, enjoying spectacular OPEN VIEWS over open countryside is the Impressive, EXTENDED SEMI DETACHED HOUSE. Having been remodelled and lovingly updated by the current owners to present a stylish, contemporary home with a fabulous OPEN PLAN LAYOUT that would suit the modern day family buyers.

The generously proportioned accommodation includes Entrance into the UTILITY/ boot room with doors to the ground floor W.C. and a door into the DINING KITCHEN, a wonderful open plan layout with central island feature, just perfect for the culinary member of the family, ideal for entertaining family & friends. There is a comfortable LOUNGE with feature BI FOLD DOORS, boasting wonderful views over the garden and open countryside beyond, a lovely room for the family to relax and unwind.

To the first floor is the family BATHROOM with four piece suite including shower cubicle and THREE SIZEABLE BEDROOMS with the main bedroom having a walk in dressing area along with the breath taking views from the first floor.

To the front of the property is a timber gate providing access to the pebbled DRIVEWAY, providing ample OFF ROAD PARKING for several vehicles and access to the GARAGE. Adorned with mature trees and shrubbery, the rear garden is mainly laid to lawn with hedging and timber fencing to boundaries, a wonderful outdoor space for the family to enjoy.

This wonderful home is ideal for the growing family with the community of Burton Pidsea offering a friendly atmosphere with amenities including : a shop, pubs, and a school and a village hall with children's play park, holding various events throughout the year.

Viewing is highly recommended !

Accommodation Comprising

Entrance & Hallway

A composite front entrance door opens to welcome you in to view this wonderful family home with stairs taking you up to the first floor and a door into the dining kitchen.

Dining Area to Kitchen



Open Plan Dining Kitchen 19'2" x 13'5" (5.86 x 4.09)

A fabulous open plan layout to the dining kitchen, dressed for Christmas entertaining with family and friends. A range of high gloss units to base and walls with built in double oven and central island feature incorporating the electric hob with stainless steel extractor hood above, perfect for the culinary member of the family. Ample space for table & chairs and useful storage cupboard. Double glazed window to front elevation, laminate floor and radiator.

Kitchen Breakfast Bar



Christmas Table



Lounge 16'3" x 15'5" (4.97 x 4.71)



A comfortable lounge with feature bi folding doors enjoying views over the rear garden and beyond, a lovely room for the family to relax and unwind. Radiator and laminate flooring.

Lounge Feature



Landing

With doors to the three bedrooms and the family bathroom.

View From Bed 1



Bedroom One & Dressing Area 16'9" x 15'5" (max) (5.13 x 4.72 (max))



A sizeable double bedroom with walk in dressing area. Double glazed window boasting views over open countryside, just lovely to wake up to.

Bedroom Two 13'7" x 10'0" (4.15 x 3.05)



A further double bedroom with double glazed window and radiator.

Bedroom Three 9'6" x 8'7" (2.92 x 2.62)



A further double bedroom with double glazed window and radiator.

Family Bathroom 9'8" x 8'8" (2.95 x 2.66)



The family bathroom has a four piece suite to include: panelled bath, low level W.C., his and hers wash basins with useful storage drawers below and large walk in shower cubicle. Tiled flooring and chrome towel heater.

Gardens



Adorned with beautiful mature trees and shrubbery, the rear garden is mainly laid to lawn adjoining open countryside with privet hedging and timber fencing to boundaries, a wonderful outdoor space for the family to enjoy.

Ground Floor W.C. 5'6" x 5'1" (1.69 x 1.56)



With toilet and wash basin.

Utility Room 15'4" x 5'6" (4.68 x 1.69)



A composite door opens to the utility room with built in cupboard and counter tops. Space and plumbing for automatic washing machine , space for fridge freezer and tumble dryer. Radiator and doors to W.C. and dining kitchen.

Garage, Driveway & Parking



A timber gate opens onto the pebbled driveway providing ample off road parking to the front of the property and access to the rear garden and garage.

Tenure

Tenure is Freehold

Council Tax Band

East Riding of Yorkshire Council Tax Band A

EPC Rating

EPC rating D

Additional Services.

Whitaker Estate Agents offer additional services via third parties: surveying, financial services, investment insurance, conveyancing and other services associated with the sale and purchase of your property.

We are legally obliged to advise a vendor of any additional services a buyer has applied to use in connection with their purchase. We will do so in our memorandum of sale when the sale is instructed to both parties solicitors, the vendor and the buyer.

Agents Notes.

Services, fittings & equipment referred to in these sale particulars have not been tested (unless otherwise stated) and no warranty can be given as to their condition. Please note that all measurements are approximate and for general guidance purposes only.

Free Market Appraisals / Valuations.

We offer a free sales valuation service, as an Independent company we have a strong interest in making sure you achieve a quick sale. If you need advice on any aspect of buying or selling please do not hesitate to ask.

Material Information.

Construction - Brick under tiled roof

Conservation Area - No

Flood Risk - Very Low

Mobile Coverage / Signal - O2 & Vodafone Good, EE & Three Okay

Broadband - Basic 18Mbps / Ultrafast 72Mbps

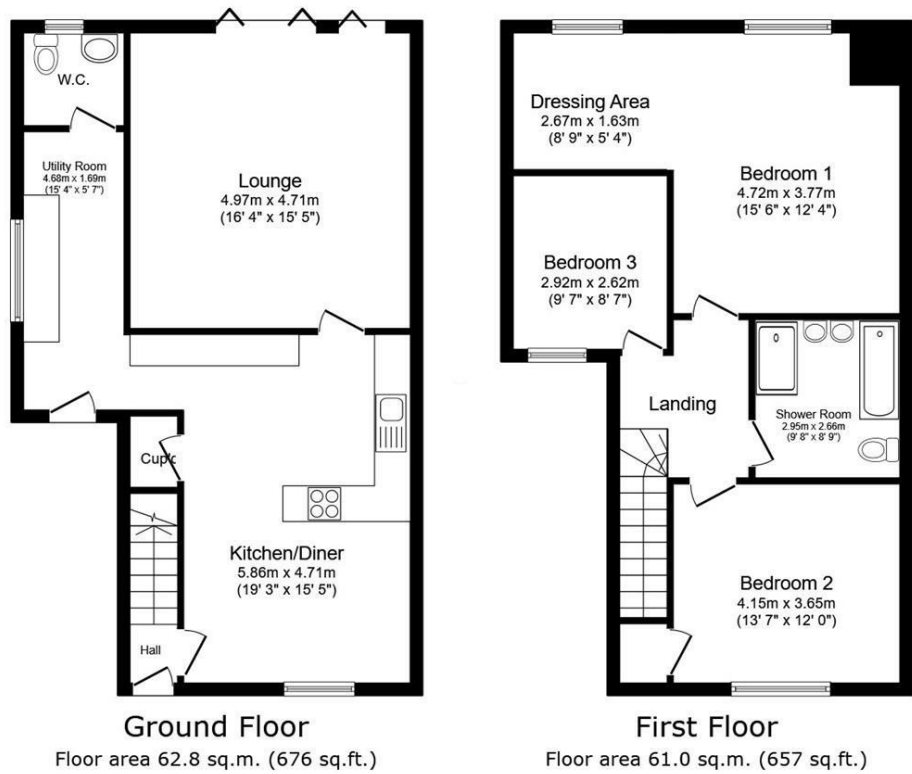
Coastal Erosion - No

Coalfield or Mining Area - No

Whitakers Estate Agent Declaration.

Whitakers Estate Agents for themselves and for the lessors of the property, whose agents they are give notice that these particulars are produced in good faith, are set out as a general guide only & do not constitute any part of a contract. No person in the employ of Whitakers Estate Agents has any authority to make or give any representation or warranty in relation to this property.

Floor Plan



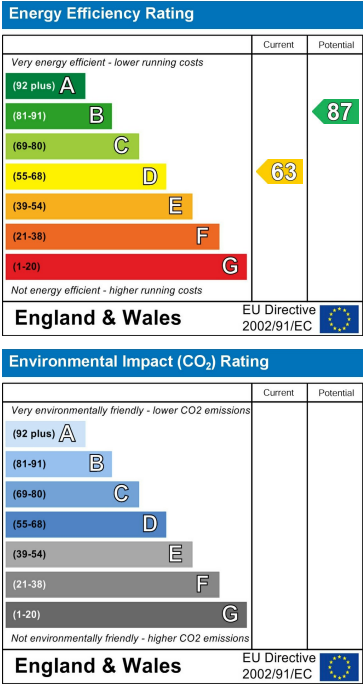
Total floor area: 123.8 sq.m. (1,333 sq.ft.)

This floor plan is for illustrative purposes only. It is not drawn to scale. Any measurements, floor areas (including any total floor area), openings and orientations are approximate. No details are guaranteed, they cannot be relied upon for any purpose and do not form any part of any agreement. No liability is taken for any error, omission or misstatement. A party must rely upon its own inspection(s). Powered by www.Propertybox.io

Area Map



Energy Efficiency Graph



These particulars, whilst believed to be accurate are set out as a general outline only for guidance and do not constitute any part of an offer or contract. Intending purchasers should not rely on them as statements of representation of fact, but must satisfy themselves by inspection or otherwise as to their accuracy. No person in this firm's employment has the authority to make or give any representation or warranty in respect of the property.